



# Nuneaton Carnival

*Sunday 16<sup>th</sup> June 2019*

*The Procession Theme is  
"Back to the 80's"*

## Stall Holders information Guide

**NUNEATON CARNIVAL DAY – Sunday 16<sup>th</sup> June 2019**

Dear Carnival Friends,

Thank you for booking a stall at this year's Carnival. This is an annual event that has been running for over 88 years, it provides the local community with an opportunity to gather in their thousands and feel the spirit of Carnival, and this year will be no exception.

We want you to get the most out of you time at our Carnival Day which is why we have put this pack together to give you all the information you need. If you spot something you think we haven't mentioned please send us an email to [carnivalgalafield@outlook.co.uk](mailto:carnivalgalafield@outlook.co.uk).

We look forward to welcoming you to Nuneaton Carnival on Sunday 16<sup>th</sup> June 2019.

Kind Regards,

Melissa and Ian  
Gala Field Managers

Important dates	
Application deadline	31 <sup>st</sup> May 2019
Carnival Day	Sunday 16 <sup>th</sup> June 2019

### What happens next?

Once you have submitted your booking form, risk assessment and payment, you will receive a confirmation email or phone call to confirm receipt. (Please remember we are volunteers who organise carnival around our day jobs and homes lives). If you don't hear from us, please get in touch.

### Your stall

With many ideas to choose from we are sure you will have a great day. Our Carnival attracts a wide range of stalls from the usual, Tombola's, book stalls, airbrush art, crafts and much much more.

**(The sale of food or drink is not allowed unless previously agreed by the Gala Field Managers).**

**NUNEATON CARNIVAL DAY – Sunday 16<sup>th</sup> June 2019**

### What you will need

Nuneaton Carnival does not provide any equipment. One stall is 3m x 3m unless you have booked a larger plot.

Below is a list of some of the items we would recommend that you bring with you. (All gazebos must be securely anchored with appropriate weights/pegs to prevent any injury.).

- Gazebo and strong Pegs
- Spare pegs
- Gazebo weights are highly recommended
- Table
- Table cloth
- Chair
- Bin bags
- Small change to get you started. Tin/collection bucket

Please remember that all your equipment must fit within your purchased space

### Advertisement

Our Committee work hard to publicise the Carnival as much as possible. This is so we can draw in big numbers, but as with any event the more publicity we get the better the event will be, please:

–Like us on Facebook – @NuneatonCarnival

–Visit our Website – [www.nuneatoncarnival.org](http://www.nuneatoncarnival.org)

And most importantly SHARE, SHARE, SHARE!!!

### On the Day

#### Where to find us

For Stall Holders, The Gala Field is located off Caldwell Road, you will need to turn into Dunns Close and the field entrance is located at the end.

Please arrive **BEFORE 10:00AM** due to the procession setting off from these roads. If walking, access is opposite the Pingles Leisure Centre (please see map included) and has FREE entry for the public on the day.

In addition to attractions and charity stalls there will be a large funfair and arena displays.

Parking for stall Holders will be in the side streets.

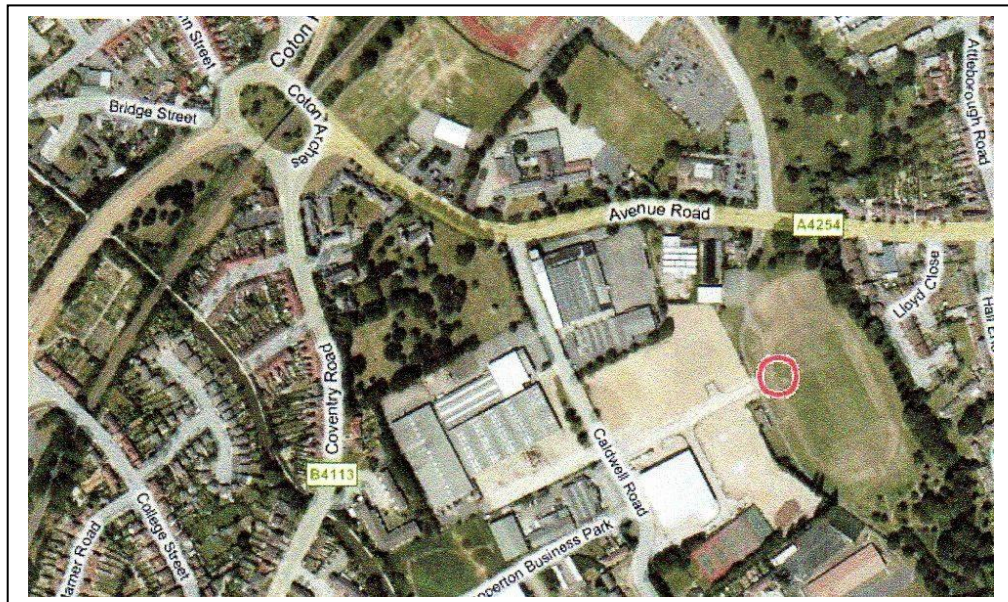
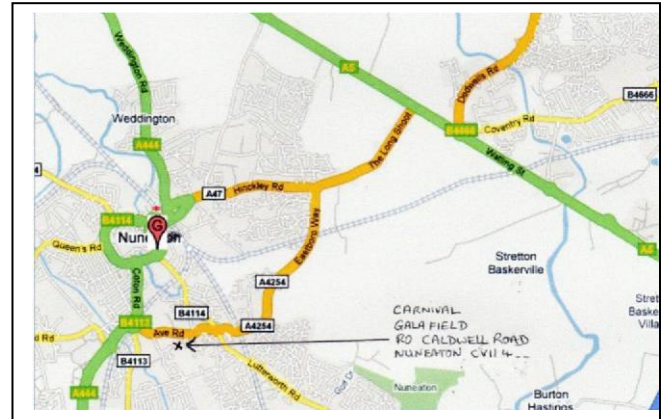
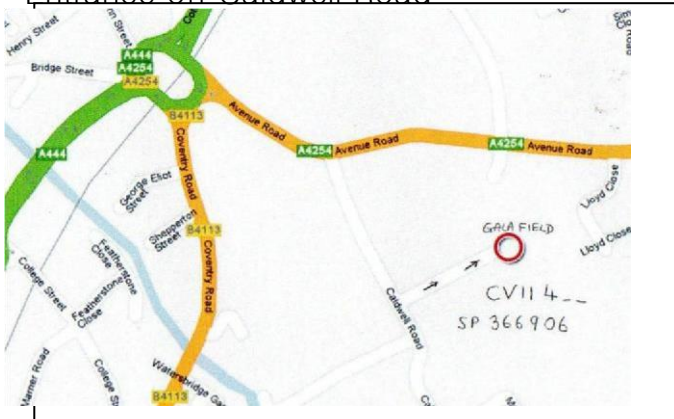
**NUNEATON CARNIVAL DAY – Sunday 16<sup>th</sup> June 2019**

## NUNEATON CARNIVAL GALA FIELD LOCATION

Post code: CV11 4NF

Grid Reference: SP 366 906

Entrance off Caldwell Road



### Setting up

Once you have been shown to your allocated plot you are able to set up, please remove your car once it has been unloaded.

### Carnival Times

The Procession will leave Dunns Close at 1:00pm and takes around 2 hours to arrive back. The Gala field is open from 1:00pm till 5:30pm. However, we do get some people looking around before this time.

**NUNEATON CARNIVAL DAY – Sunday 16<sup>th</sup> June 2019**

### At the end of the day

At the end of a long day we know you will want to get off as soon as you can, please be aware that vehicles cannot come onto the field until 5:30pm unless the Gala Field managers deem it safe to do so before.

We are sure you will appreciate there are lots of people around and we don't want any injuries, their safety is our priority.

Before you leave could you please put all of your rubbish in the allocate area.

We would like to ask everyone that's joining Carnival to invite all your friends, family, colleagues etc to join in the fun!

If you have anywhere you could display a poster for us please let us know.

### Feedback

We would be grateful for any feedback you could give us. We work hard to put this event on for everyone to enjoy, so any feedback that would help us to improve the Carnival is very welcome.

### Useful Contacts

#### Gala Field Managers

Melissa Hutchinson

Ian Knight

Email – [carnivalgalafield@outlook.com](mailto:carnivalgalafield@outlook.com)

#### Procession Manager and Chairman

Martin Hobbins

Email – [Martincarnival67@gmail.com](mailto:Martincarnival67@gmail.com)

#### Procession Manager

Jackie Bennett

[Martincarnival67@gmail.com](mailto:Martincarnival67@gmail.com)

Phone: 07507764267

#### Carnival Queen Manager

Charlotte Aspley

Email – [charlottecarnival@hotmail.com](mailto:charlottecarnival@hotmail.com)

Thank you and we hope you have a great day!

**NUNEATON CARNIVAL DAY – Sunday 16<sup>th</sup> June 2019**